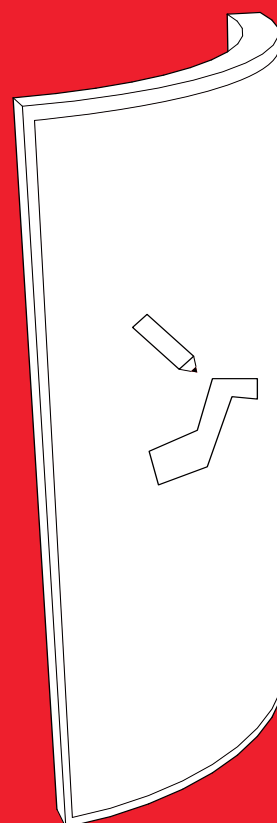




EN



1.9

Clever Frame®

GRAPHIC PANELS PREPARATION FOR THE r - FRAME

Modular Sale Support Architecture

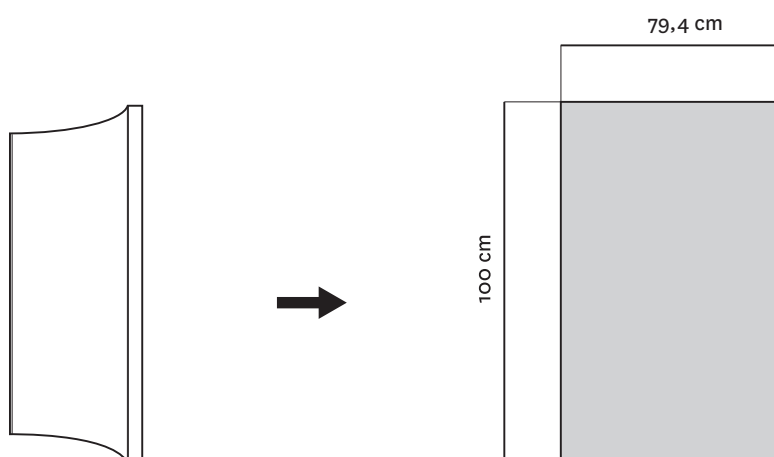
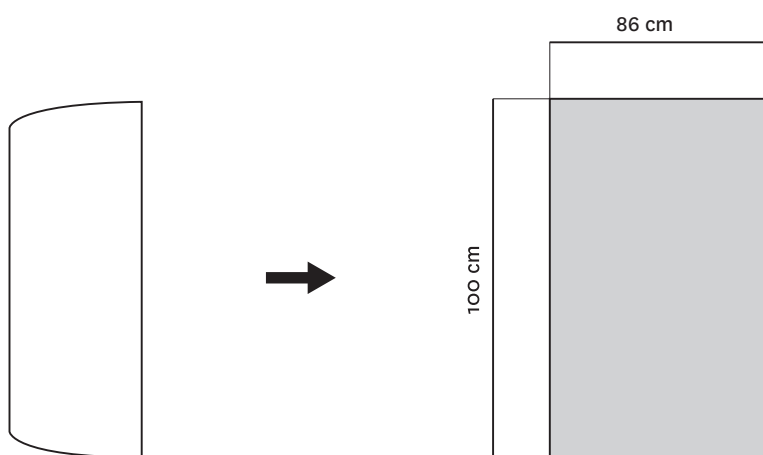


TABLE OF CONTENTS

GRAPHIC DESIGN FOR r-1 FRAME_s.3 ↙

GRAPHIC DESIGN FOR r-2 FRAME_s.4 ↙

HOW TO NAME THE FILES_s.5 ↙



3 mm of each side of the graphic panel is being cut out during production.



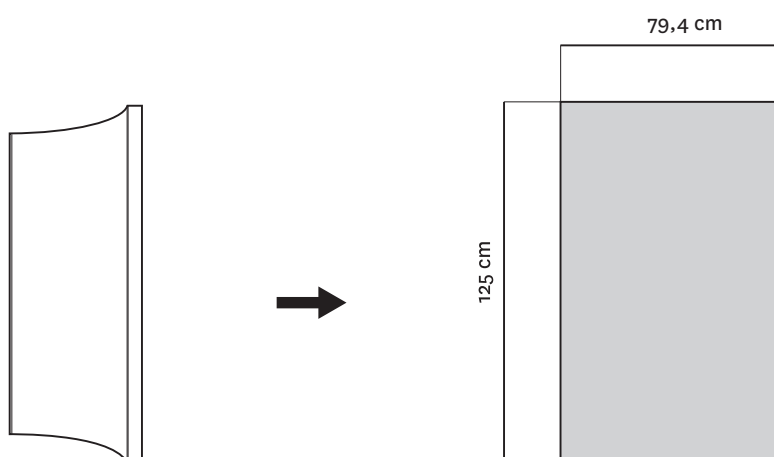
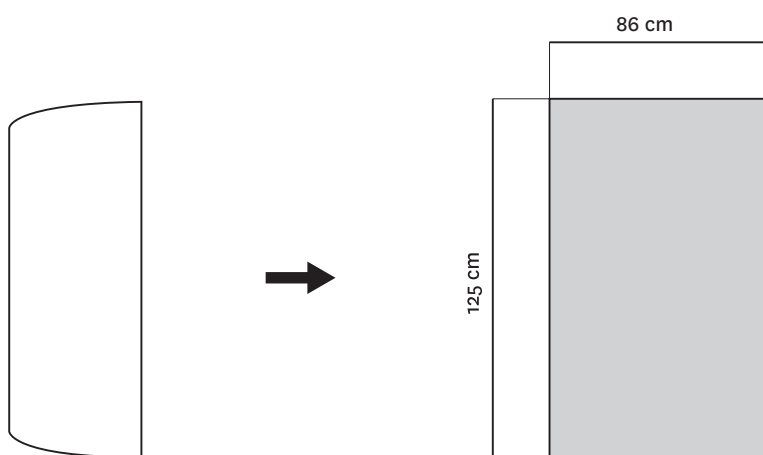
Do not place essential design elements at the intersections of the graphic panels.



Graphic design specification: TIFF-LZW/1:1/CMYK/120 dpi.



We ask you to flatten the layers (except for back-lit panels).



3 mm of each side of the graphic panel is being cut out during production.



Do not place essential design elements at the intersections of the graphic panels.

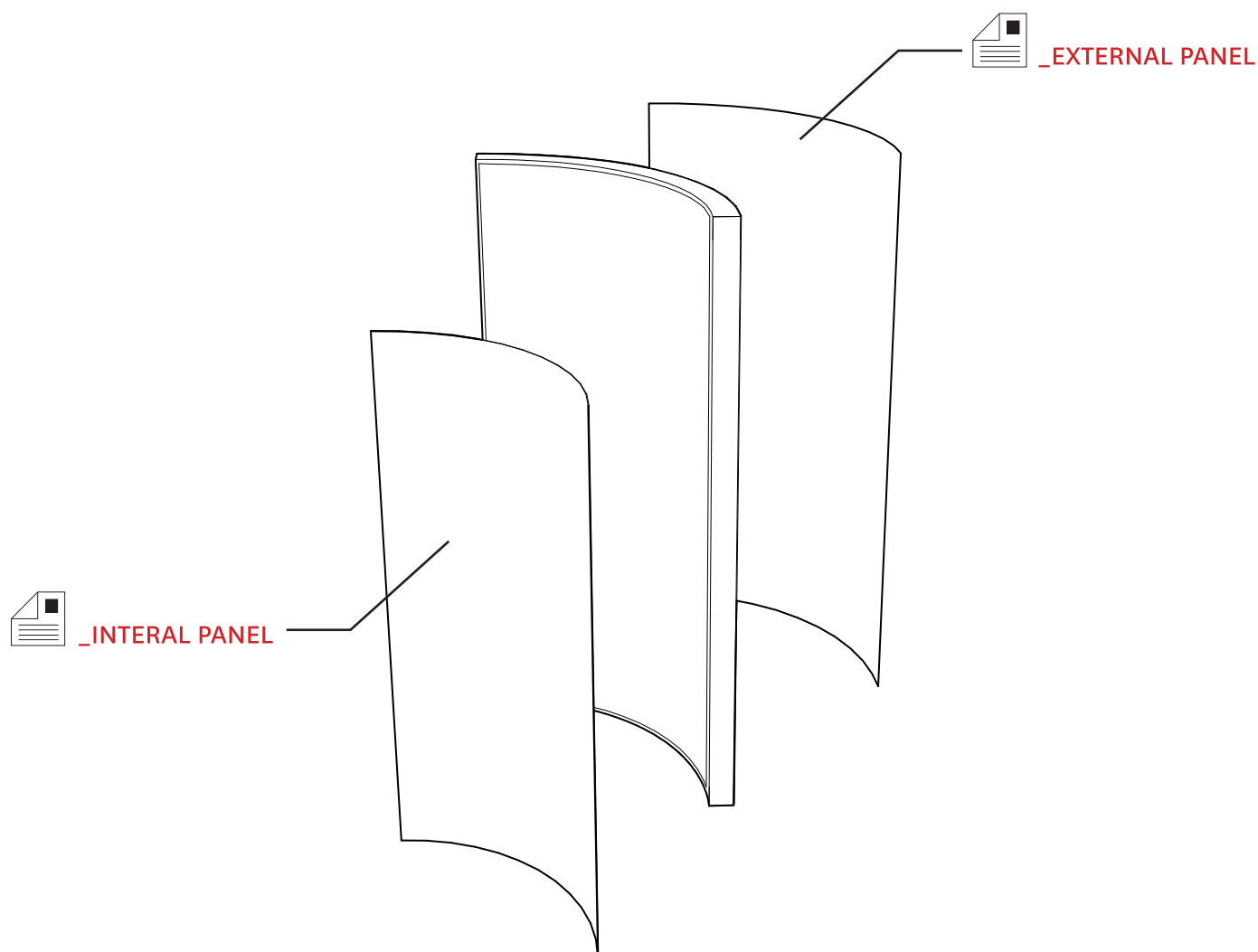


Graphic design specification: TIFF-LZW/1:1/CMYK/120 dpi.



We ask you to flatten the layers (except for back-lit panels).

HOW TO NAME THE FILES



You need to remember that due to the curved shape of the frame the internal and external panels have different widths.

You have to always mark whether the graphic design is for the internal or external panel.

We establish the internal panel to be the one at the 50 cm radius side of the frame and the external panel the one at the 55cm radius side of the frame.
